

Yadkin Regional Water Supply Project

April 6, 2017



Key Takeaways

- Interbasin transfers are common and critical
- Growing communities must collaborate across boundaries
- Partnerships ensure the stability of a region and ability for growth





Ed Goscicki

Union County Executive Director of
Public Works



John Mullis

Town of Norwood Administrator &
Union County Partner on proposed
IBT from Lake Tillery

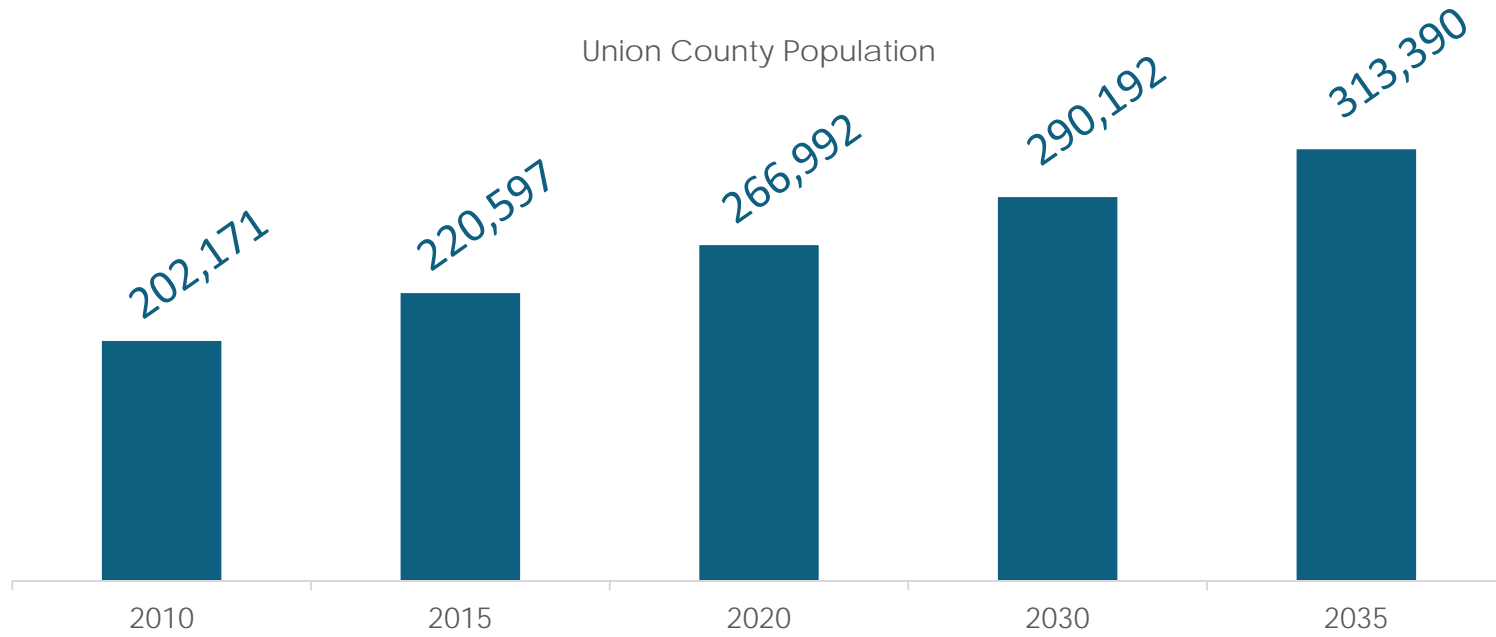




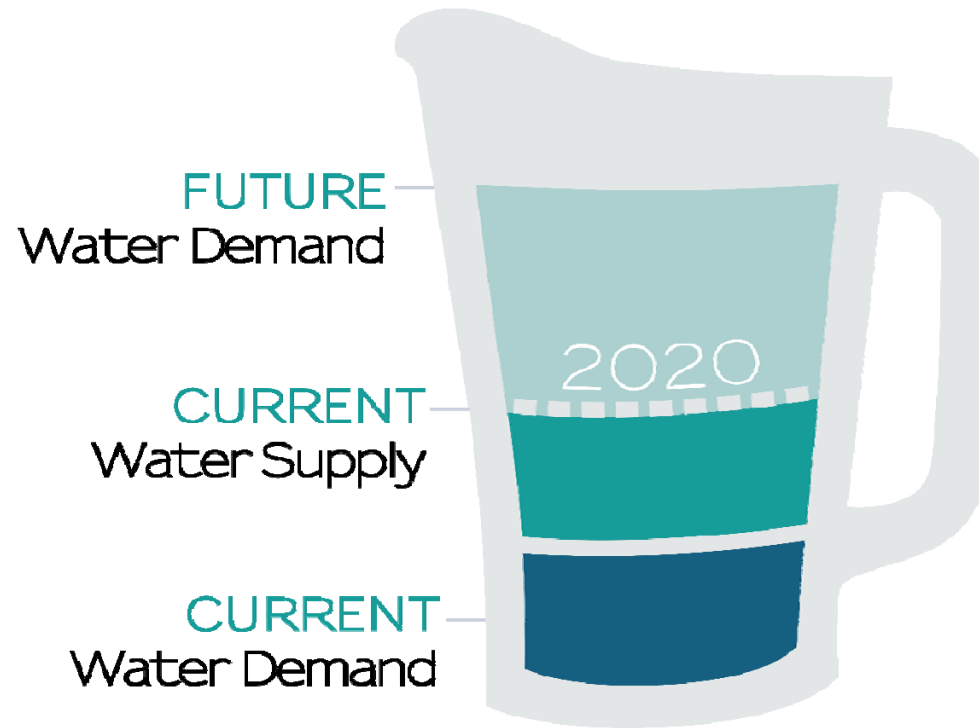
[Video Link](#)



Regional Growth



Water Demand

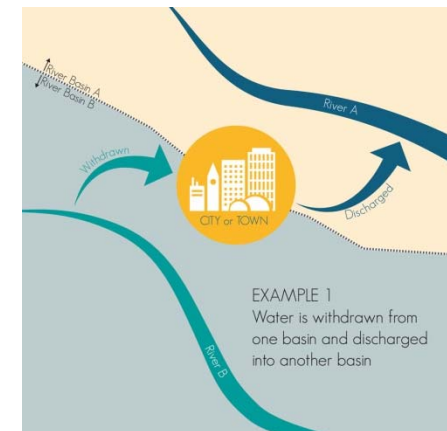
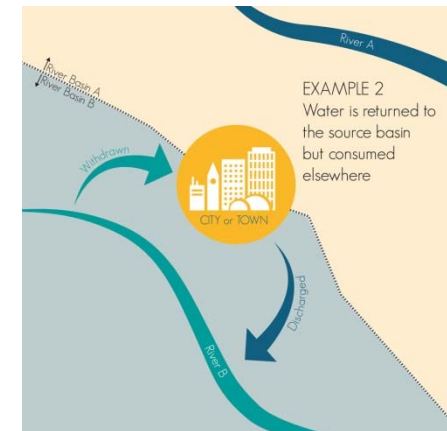


What is an Interbasin Transfer?

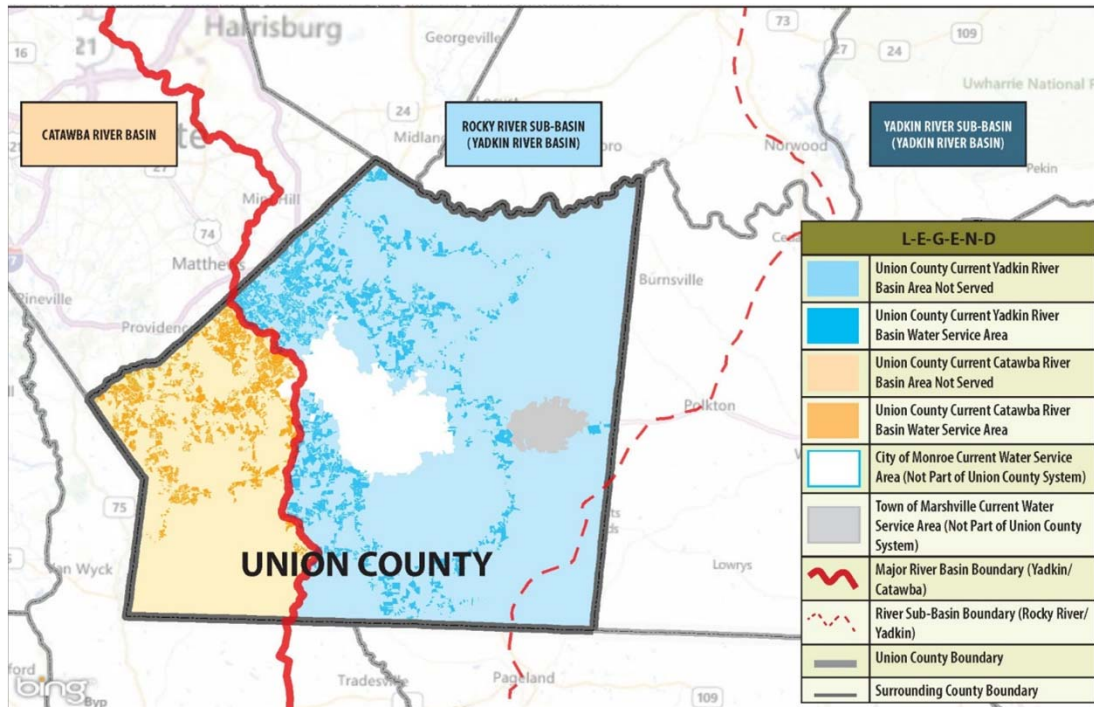
An interbasin transfer is the movement of surface water from one river basin into another.

The Environmental Management Commission (EMC) is the unit responsible for approving or denying requests for IBT certificates. Their responsibility is to ensure that all transfers are:

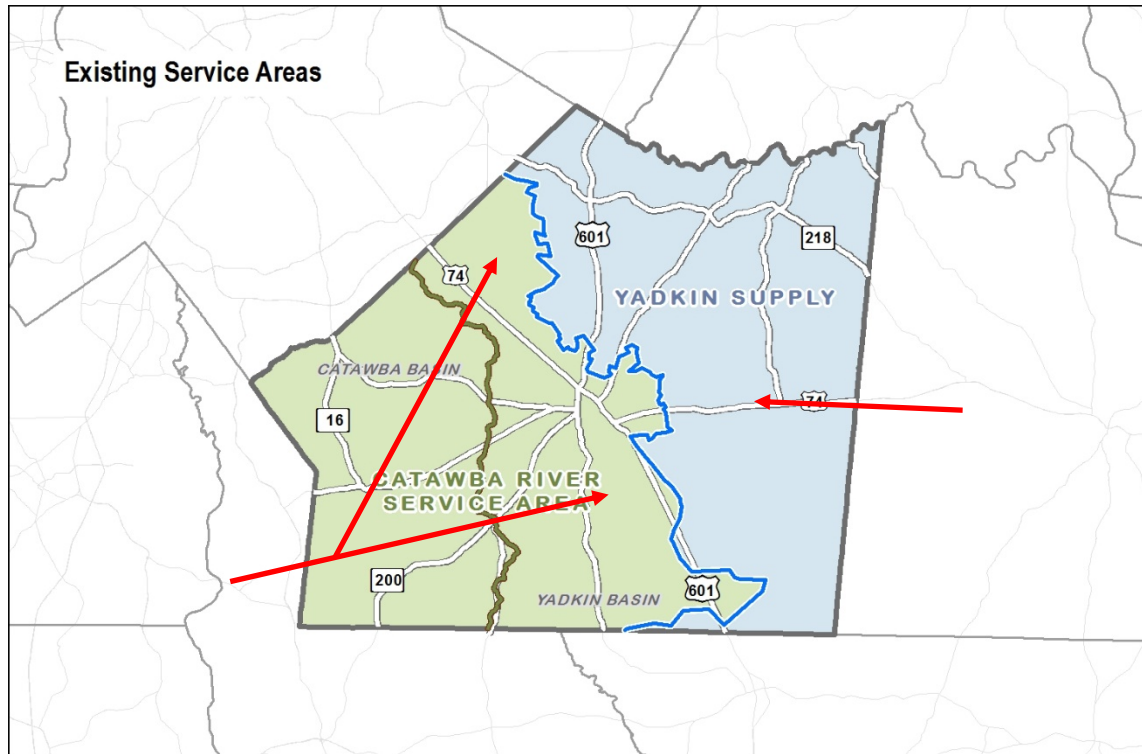
- Necessary
- Reasonable
- Beneficial
- Not detrimental on the source or receiving river basin
- Have reasonable proposed alternatives



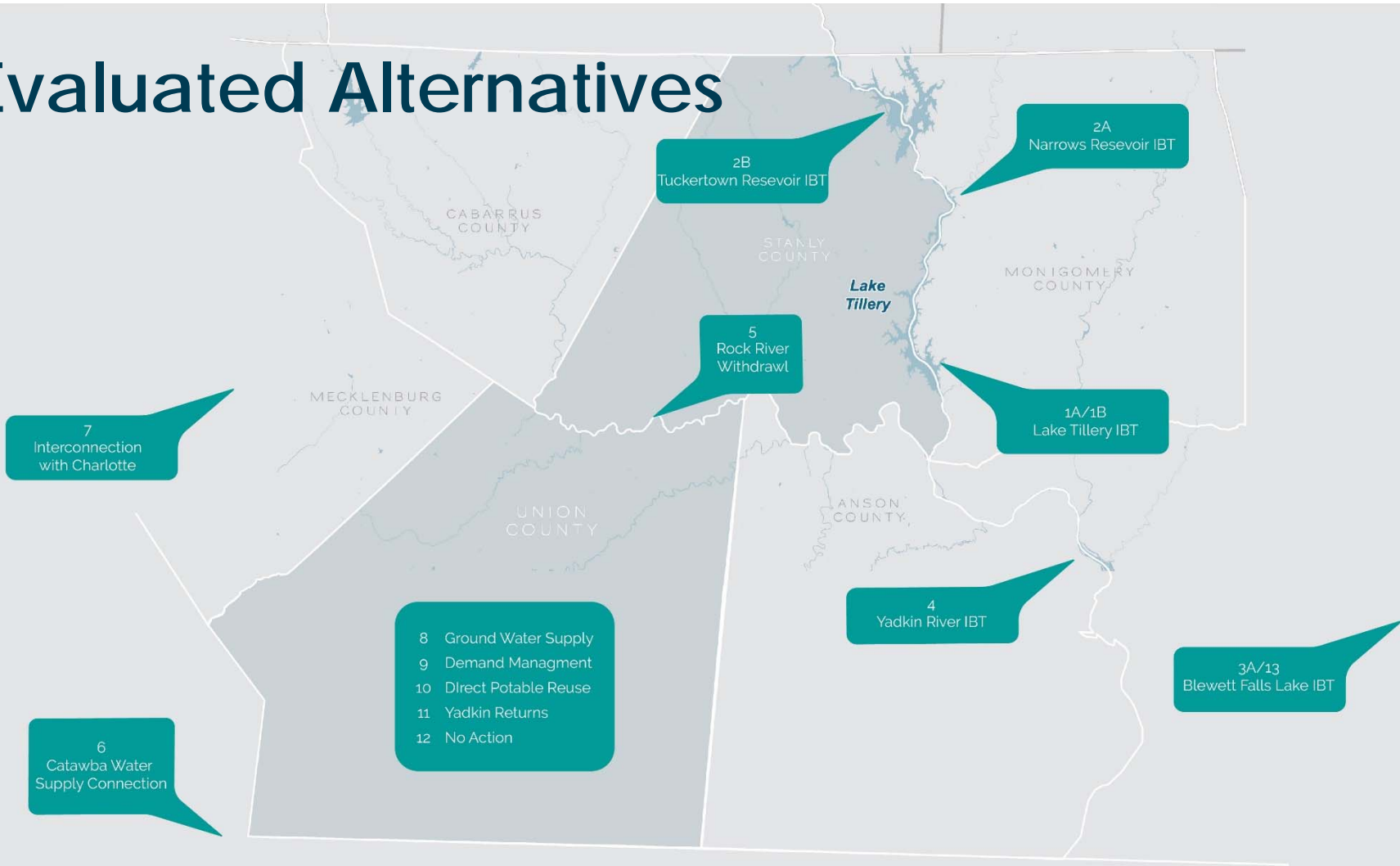
The County's Service Areas Are Not Near Major River Basin Water Sources



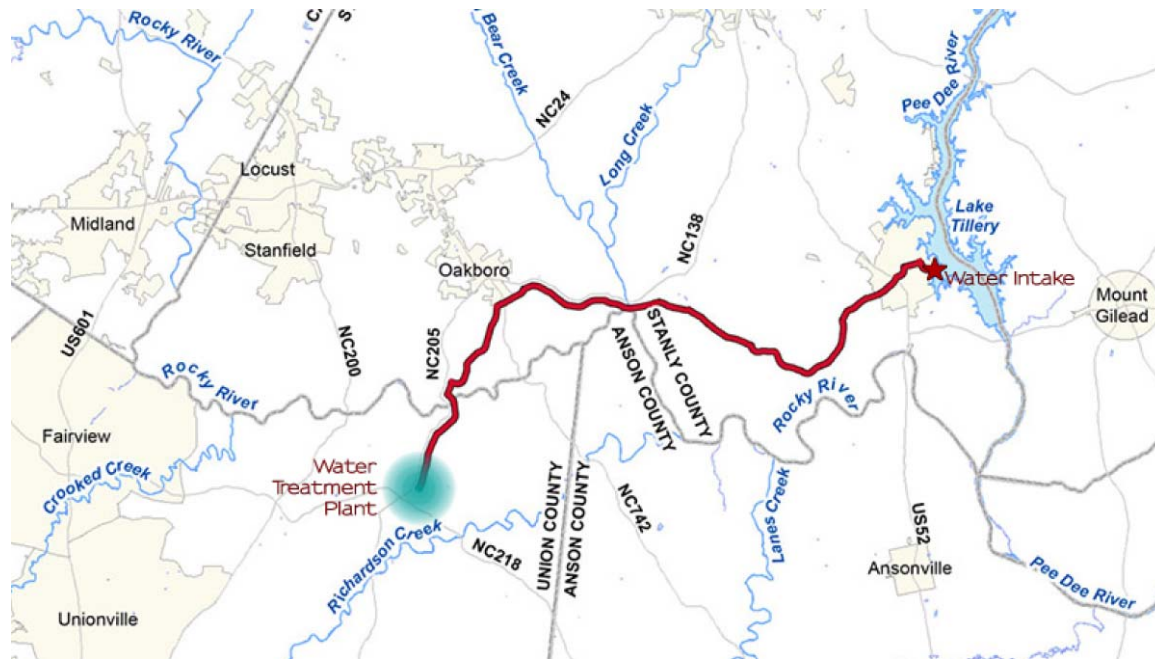
The County Currently Depends Heavily on Our Catawba River Supply and our 5-mgd 'Grandfathered' IBT Limit



Evaluated Alternatives



Preferred Alternative



Benefits of Preferred Alternative



WATER SUPPLY

Alternative 1A can supply the 28.9 mgd needed for current and future needs.




COST

Alternative 1A represents one of the lowest cost alternatives and is a financially feasible option for this water supply.



LAKE IMPACTS

Alternative 1A has less impact on lake aesthetics, other water needs, and hydropower than the other alternatives evaluated.



ENVIRONMENTAL

The environmental impacts of Alternative 1A are similar, or significantly less, than the other alternatives evaluated.



COMMUNITY

The water supply partnership between the Town of Norwood and Union County makes 1A the most politically acceptable alternative.

State Regulatory Process



Community Partnership



WATER SUPPLY

Alternative 1A can supply the 28.9 mgd needed for current and future needs.



COST

Alternative 1A represents one of the lowest cost alternatives and is a financially feasible option for this water supply.



LAKE IMPACTS

Alternative 1A has less impact on lake aesthetics, other water needs, and hydropower than the other alternatives evaluated.



ENVIRONMENTAL

The environmental impacts of Alternative 1A are significantly less than other alternatives evaluated.



COMMUNITY

The water supply partnership between the Town of Norwood and Union County makes 1A the most politically acceptable alternative.

PARTNERSHIP ▶

