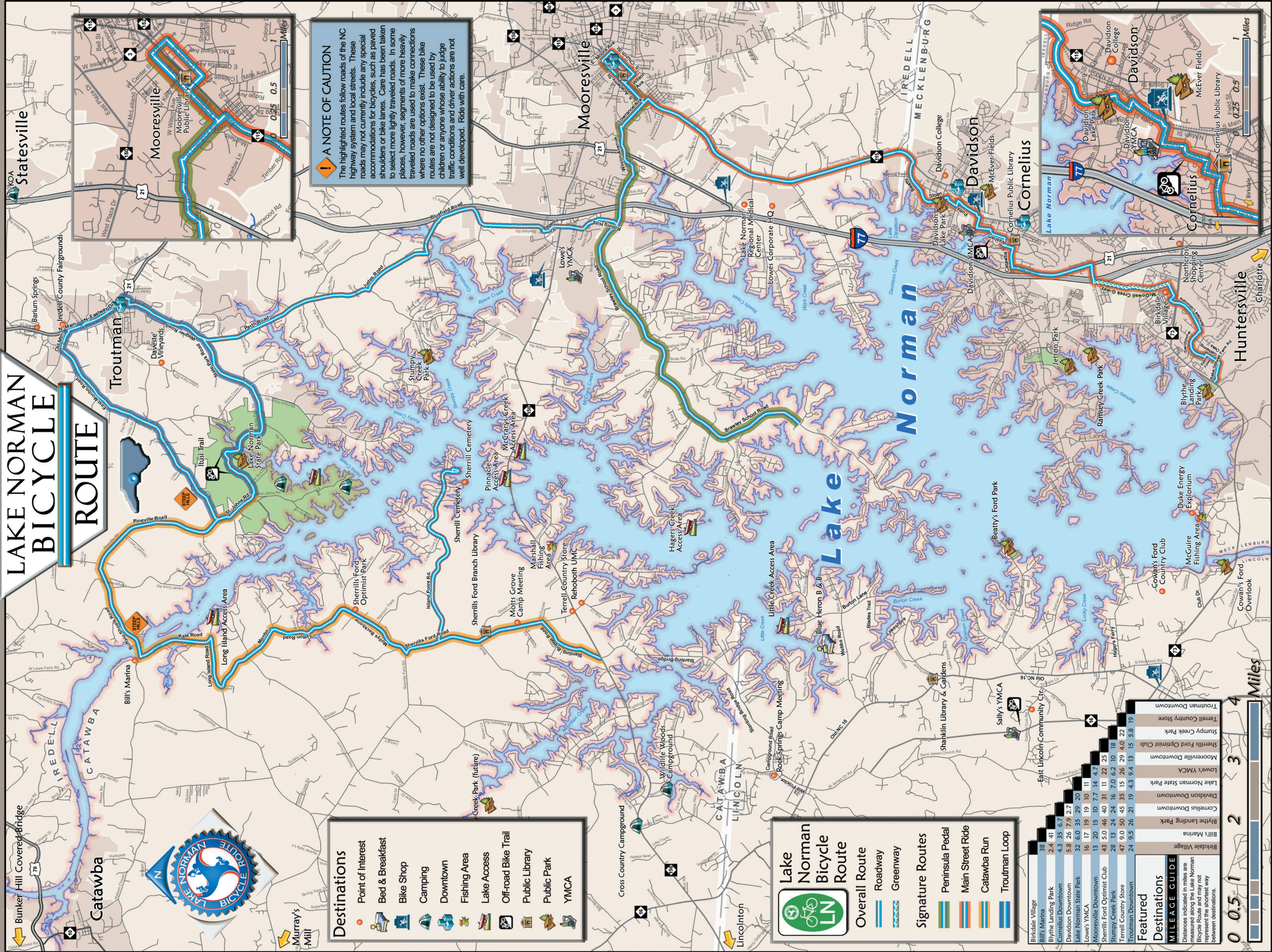


LAKE NORMAN BICYCLE ROUTE



A NOTE OF CAUTION

The highlighted routes follow roads of the NC highway system and local streets. These roads may not currently include any special accommodations for bicycles, such as paved shoulders or bike lanes. Care has been taken to select more lightly traveled roads. In some places, however, segments of more heavily traveled roads are used to make connections where no other options exist. These bike routes are not designed to be used by children or anyone whose ability to judge traffic conditions and driver actions are not well developed. Ride with care.

- Destinations**
- Point of Interest
 - Bed & Breakfast
 - Bike Shop
 - Camping
 - Downtown
 - Fishing Area
 - Lake Access
 - Off-road Bike Trail
 - Public Library
 - Public Park
 - YMCA

- Lake Norman Bicycle Route**
- Overall Route**
- Roadway
 - Greenway
- Signature Routes**
- Peninsula Pedal
 - Main Street Ride
 - Catawba Run
 - Troutman Loop

Featured Destinations

MILEAGE GUIDE

Distances indicated in miles are measured along the Lake Norman Bicycle Route and may not represent the shortest way between destinations.

Destination	0	0.5	1	2	3	4
Birkdale Village	38					
Blythe Landing Park	2.4	41				
Cornelius Downtown	4.3	35	6.7			
Davidson Downtown	5.8	26	7.9	2.7		
Lake Norman State Park	32	6.0	35	29	20	
Love's YMCA	16	17	19	10	11	
Mooresville Downtown	13	20	15	10	7.7	14
Sherrills Ford Optimist Club	43	5.0	46	40	31	11
Stumpy Creek Park	28	13	24	16	7.0	6.2
Terrell Country Store	47	9.0	50	45	35	15
Troutman Downtown	24	9.5	26	21	19	4.3